



# Growing Intermodal Traffic in CEEC Countries

March, 25th 2010  
Vienna

Rok Svetek  
Managing Director

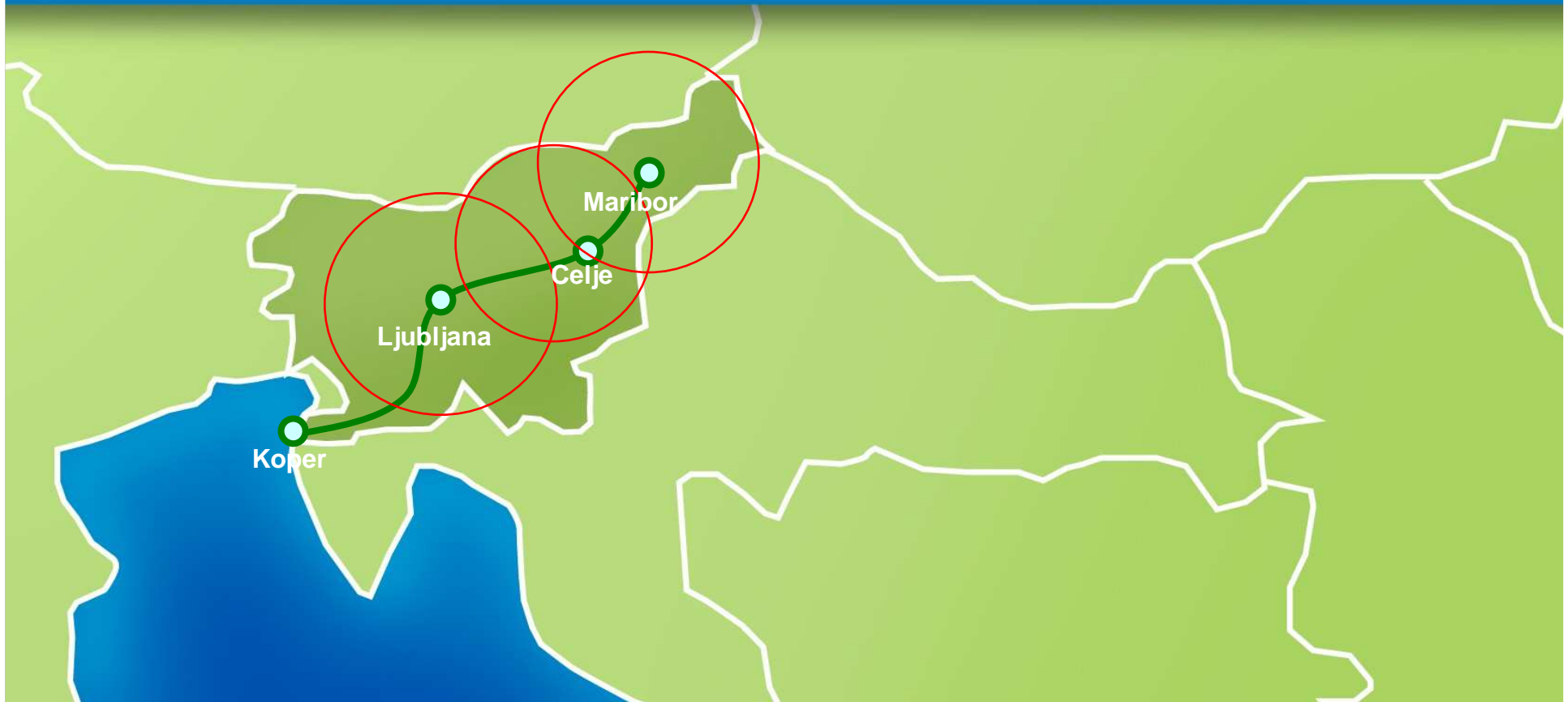


# Rolling Motorway

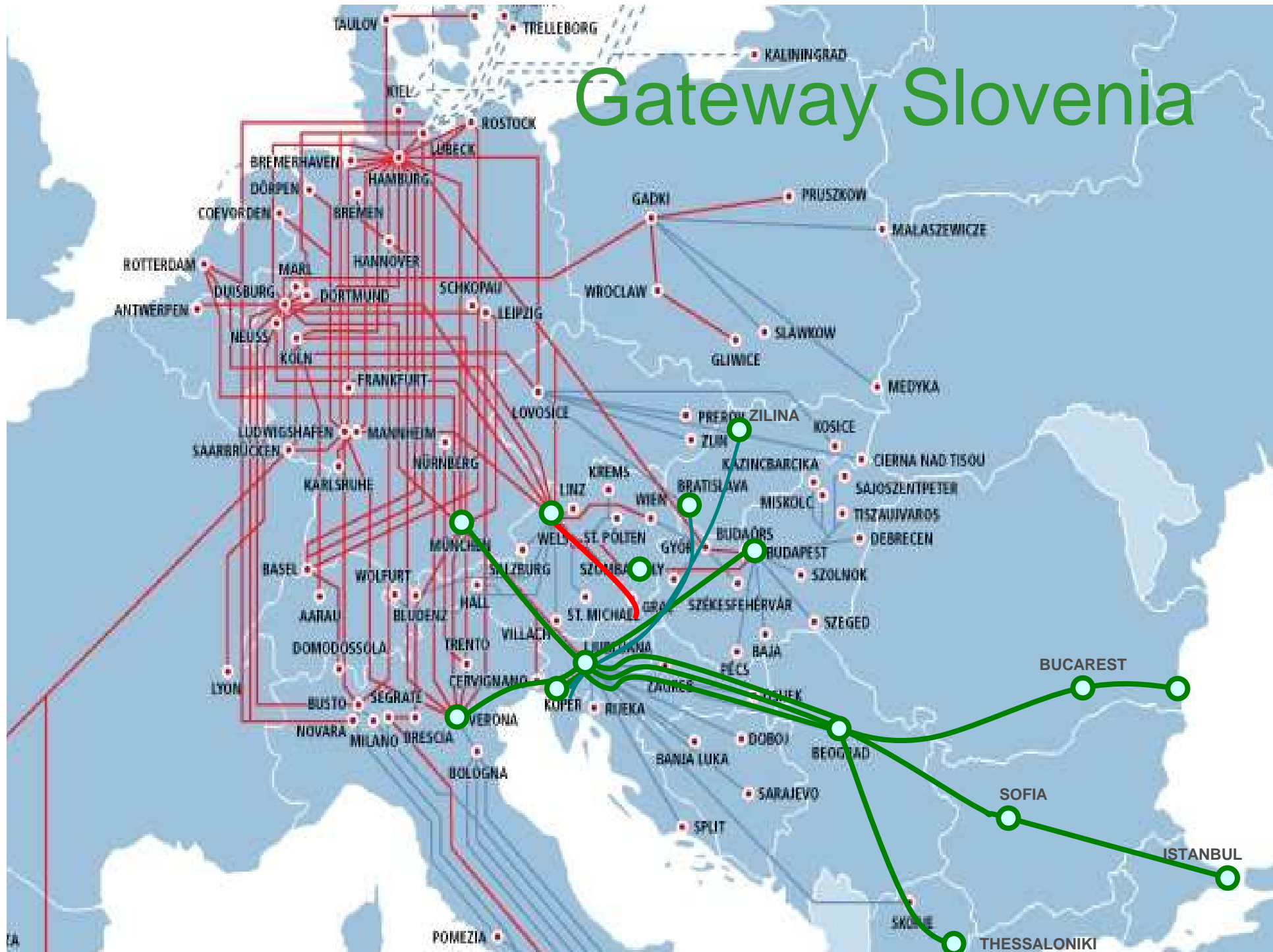


# KOMAR Network

## Rail & Truck



# Gateway Slovenia





MARCO POLO   
NEW WAYS TO A GREEN HORIZON

**SINGER**

# Project SINGER





# Project SINGER



## Main axes of SINGER Project:

- Ljubljana – Munich
- Ljubljana – Budapest
- Ljubljana – Verona
- Ljubljana – Koper port
- Ljubljana – Former Yugoslav States
- Ljubljana - Romania





# Project SEEIS



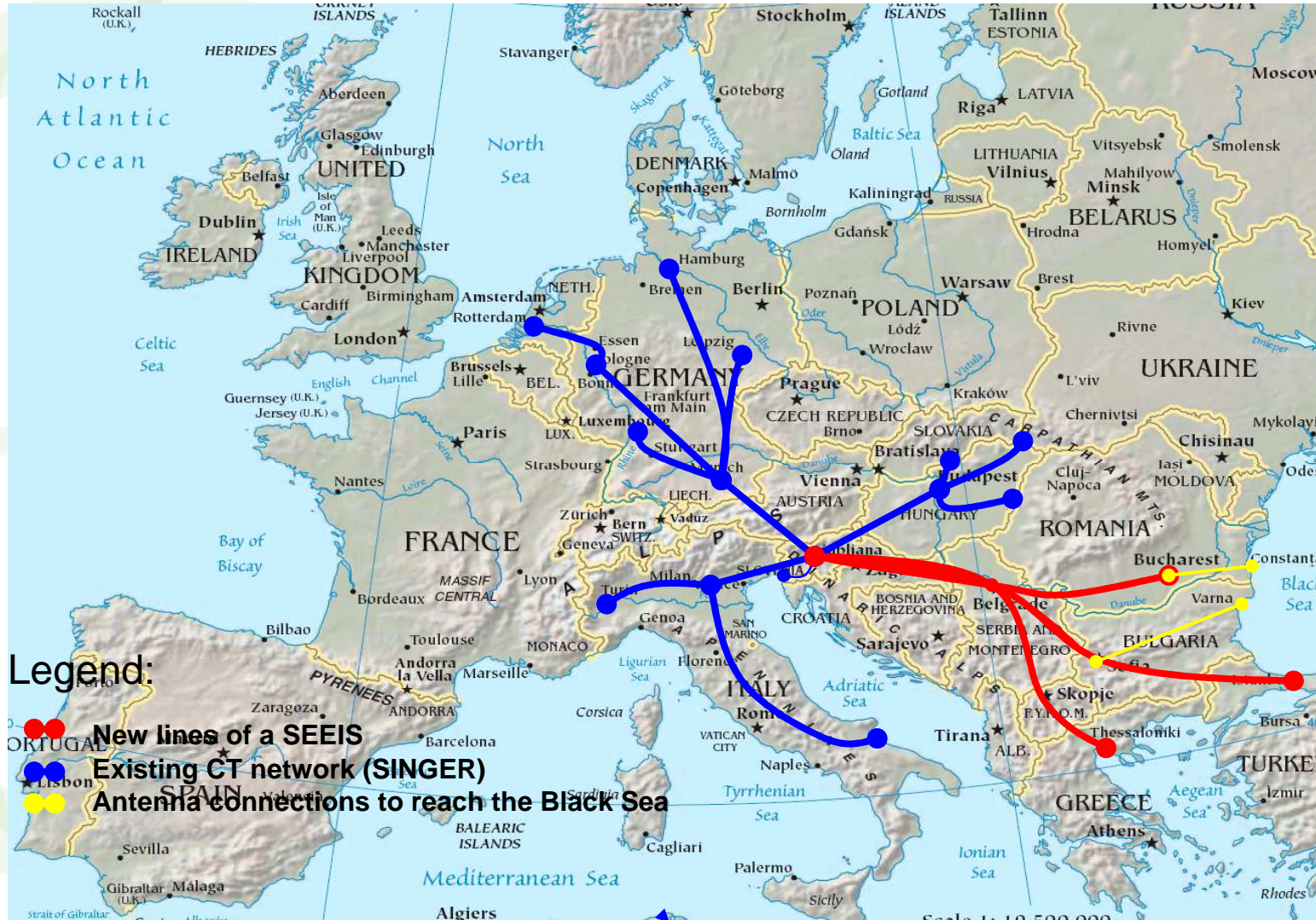
- SEEIS idea is to connect already developed NW European network (SINGER lines) with important terminals in SEE
- Helping our Clients to reach Balkans and Turkey
- Offering the well developed CT system to SEE countries
- Shift cargo from road to rail





MARCO POLO  
NEW WAYS TO A GREEN HORIZON

# Project SEEIS



Legend:

- New lines of a SEEIS
- Existing CT network (SINGER)
- Antenna connections to reach the Black Sea

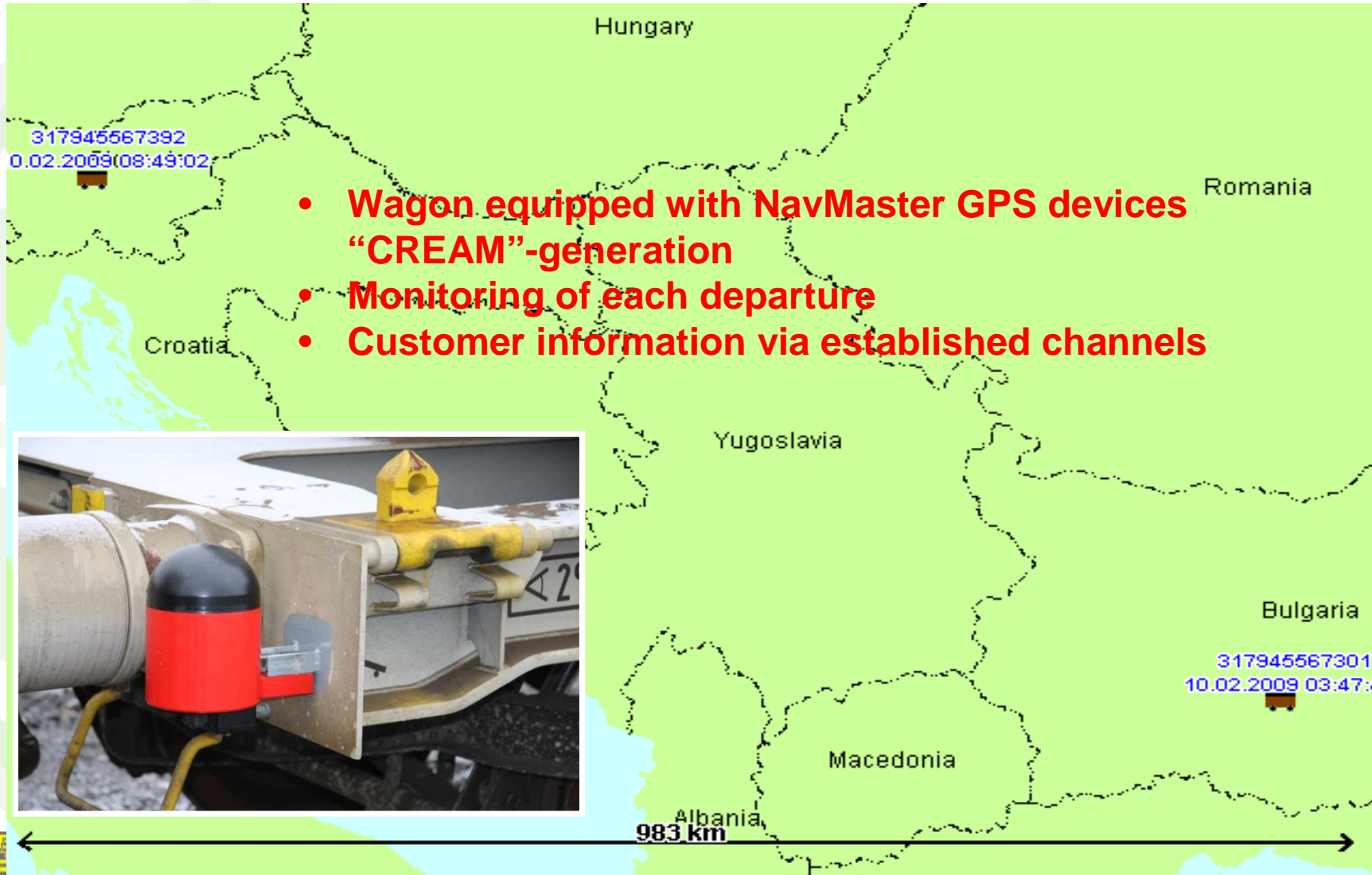




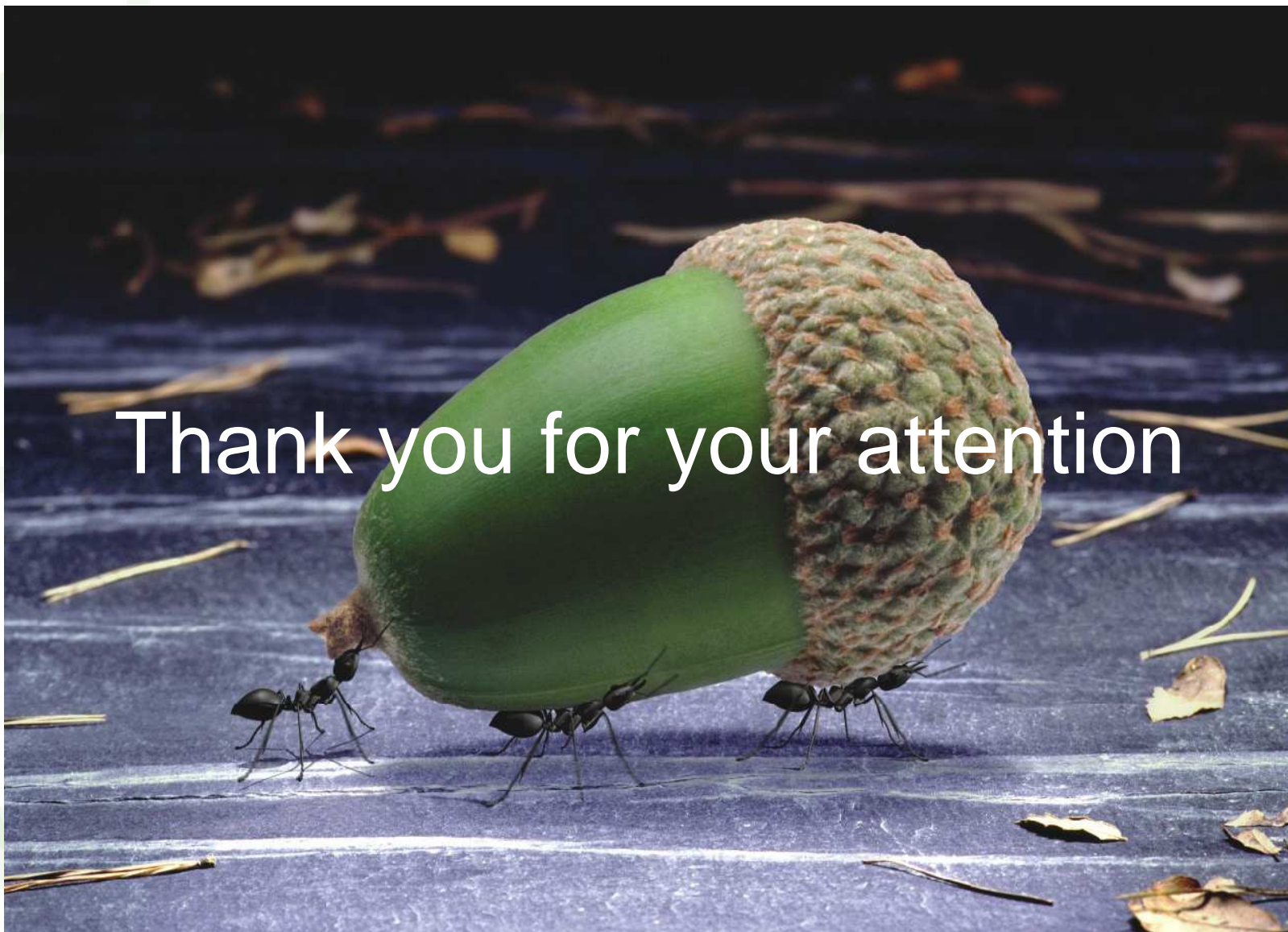
## Obstacles for a successful development of intermodal traffic

- Obsolete infrastructure
- Long transit times -
- Train length (500 m – 550 m) needed at least 600 m
- Weight – existing up to 1.300 tons; needed up to 2.000 tons
- Punctuality – less than 40% in the region
- Competitive tariffs

# Monitoring



- Wagon equipped with NavMaster GPS devices “CREAM”-generation
- Monitoring of each departure
- Customer information via established channels



Thank you for your attention

